

# VEHICLE INSPECTION REPORT

**PJ66BVH**

## Daf LF 150

Non Runner

### Inspection

Serious Damage? No

### Vehicle

VAT Plus VAT

V5 To Follow

### Details

Reg. date 16/11/2016

VIN XLRAEL1500L459840

Gearbox MANUAL

Year 2016

Body Style Box Van

Axle Combi 4x2

Mileage 889,704 Km Warranted

Service history Yes

Rear Suspension Steel

Fuel Type Diesel

MOT Due 31/07/2026

Tail Lift Cantilever

Colour RED

Cab Type DAY CAB

\*NON RUNNER, CRANKS BUT DOES NOT FIRE\*

### Tyres

NSF NSI1

NSI2

NSI3

NSI4

OSF OSI1

OSI2

OSI3

OSI4

Spare NSO1

NSO2

NSO3

NSO4

OSO1

OSO2

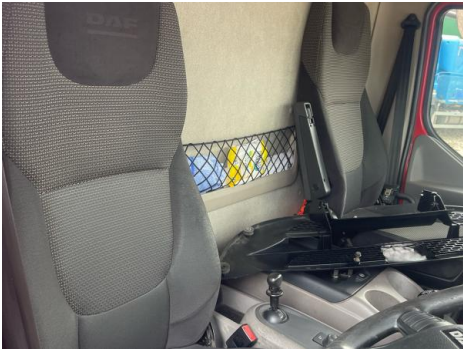
OSO3

OSO4

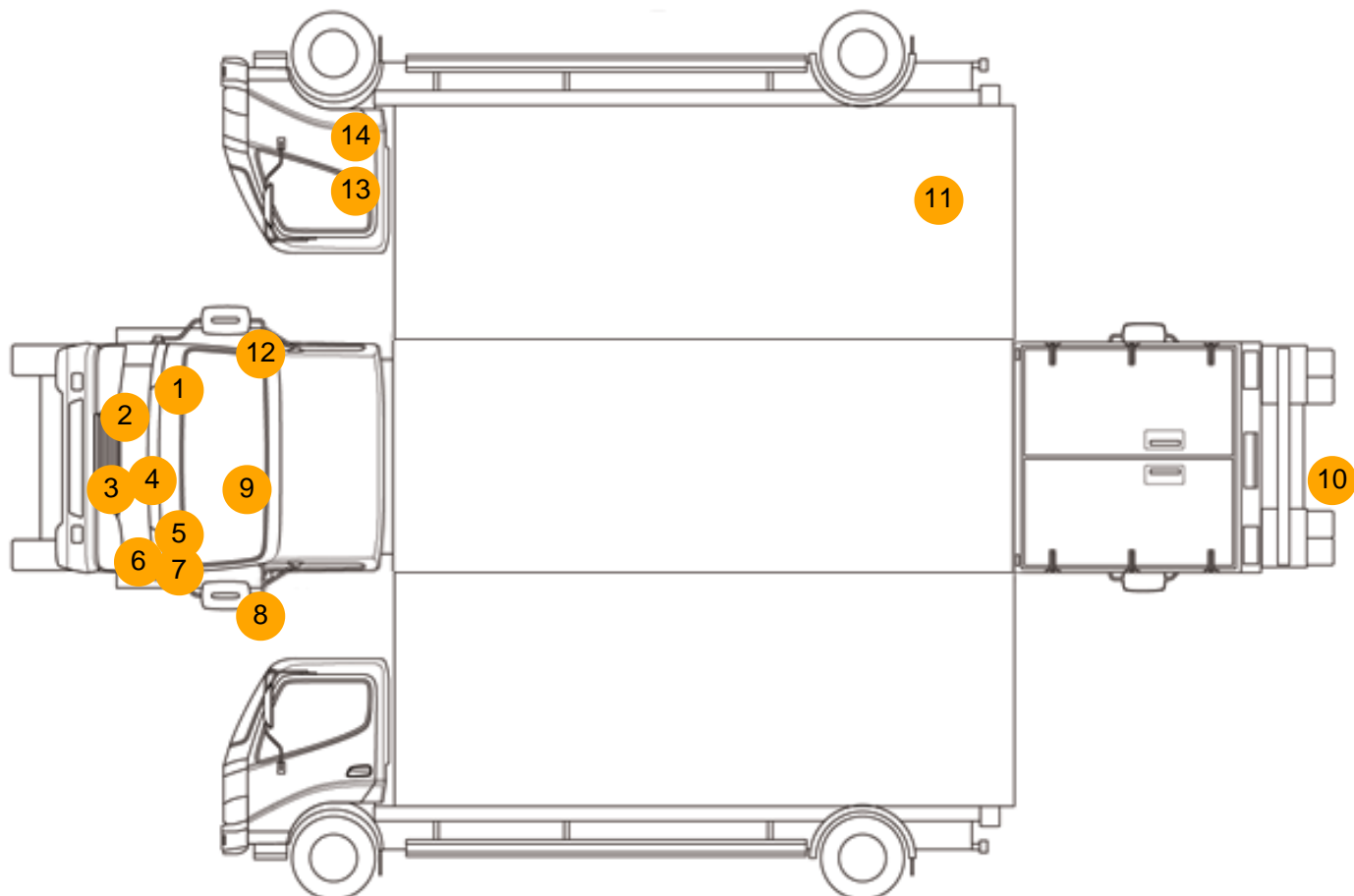
### Photos







## Condition Check



## Damage Photos



1: Wing osf  
Chipped  
Multiple Chips



2: Bumper Front  
Chipped  
Multiple Chips





3: Bumper Front  
Chipped  
Multiple Chips



4: Grille Front  
Missing  
Replace



5: Bonnet  
Cracked  
Replace



6: Bumper Front  
Chipped  
Multiple Chips



7: Wing nsf  
Scratched  
Over 25mm Not Thru Paint



8: Door Mirror Assy nsf  
Scuffed (Unpainted)  
UpTo 100mm





9: Screen Front  
Chipped  
UpTo 10mm



10: Bumper Rear  
Rusted  
Over 5mm



11: Qtr Panel osr  
Scratched  
Over 25mm Not Thru Paint



12: Door Mirror Assy osf  
Scuffed (Unpainted)  
UpTo 100mm



13: Door osf  
Dented  
Between 10mm + 30mm



14: Door osf  
Scratched  
UpTo 25mm Thru Paint

## Interior

Carpet Condition	OK	Upholstery Condition	OK
Seat Condition	OK	Odour	-
Engine Runs	Fault		